

EXECUTIVE PARK WEST

6833-6899 W. Charleston Blvd
Las Vegas, NV 89117

FOR LEASE

Office Space

Firms, accountants counseling
 professionals
 ready or fully customizable in a
 configurations
 entrances and private restrooms
 with mature landscaping
 courtyards
 available; ample spaces for client
 available
 personnel



Donna Shore

D: (503) 343-3239

O: (503) 675-4596

DonnaShore@americancapitalpropertiesllc.com

acp-sw.com

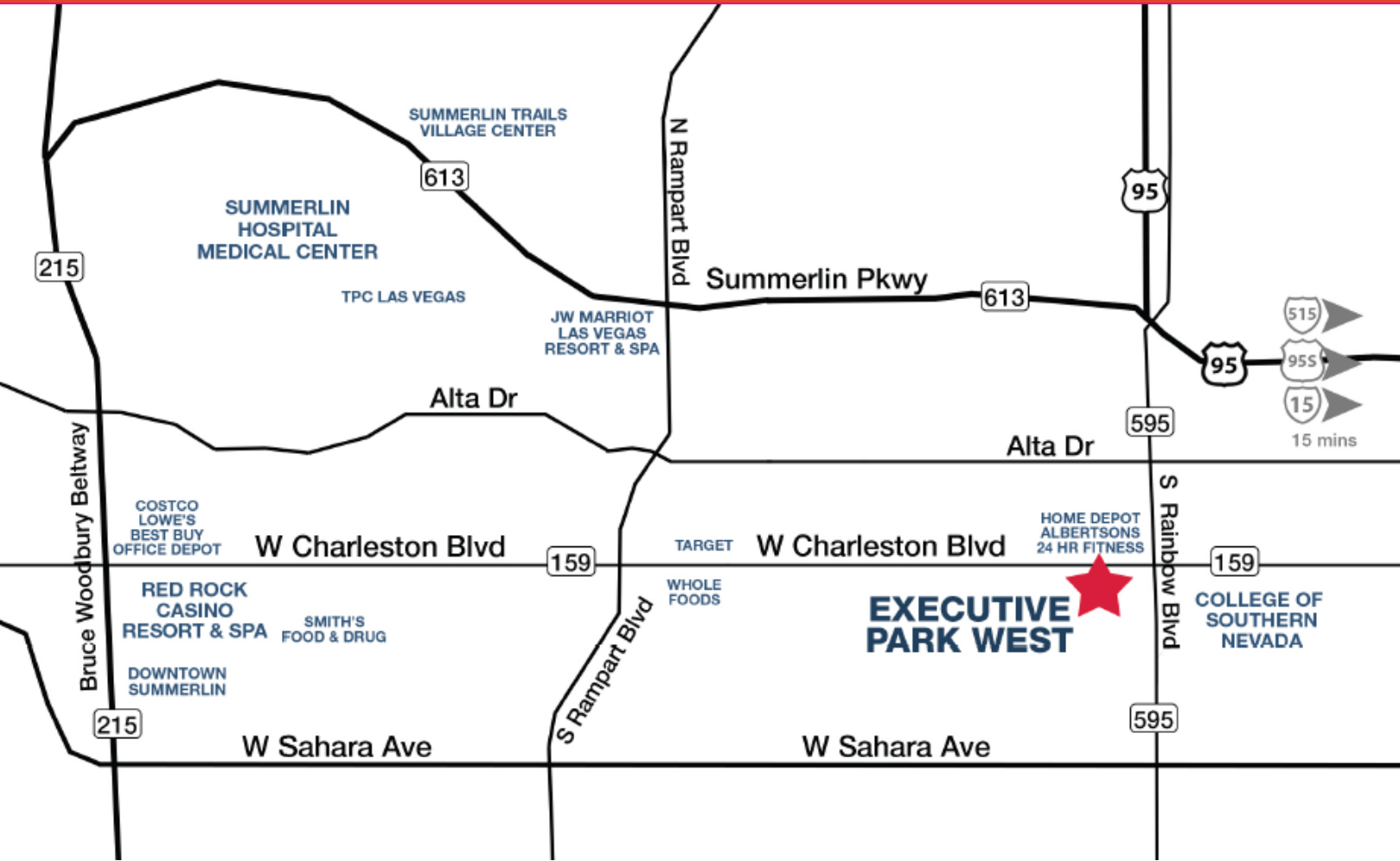


AMERICAN CAPITAL PROPERTIES

FOR LEASE

EXECUTIVE PARK WEST

6833-6899 W. Charleston Blvd
Las Vegas, NV 89117



AVAILABILITIES

Suite	RSF	Comments
6893-6899	5,152 RSF	Reception, Perimeter Offices, Kitchen, Conference Room, IT Room, Open Area
6885	2,520 RSF	Fully built out & improved suite

FSG asking rate

USE Creative and traditional office space

LANDLORD will demise and/or build-to-suit all available suites

Donna Shore

D: (503) 343-3239

O: (503) 675-4596

DonnaShore@americancapitalpropertiesllc.com

acp-sw.com

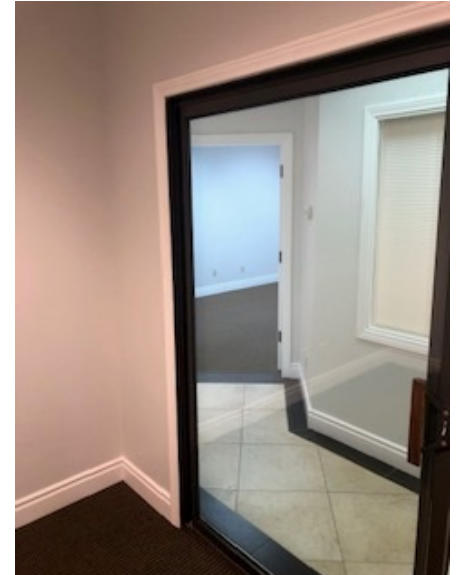
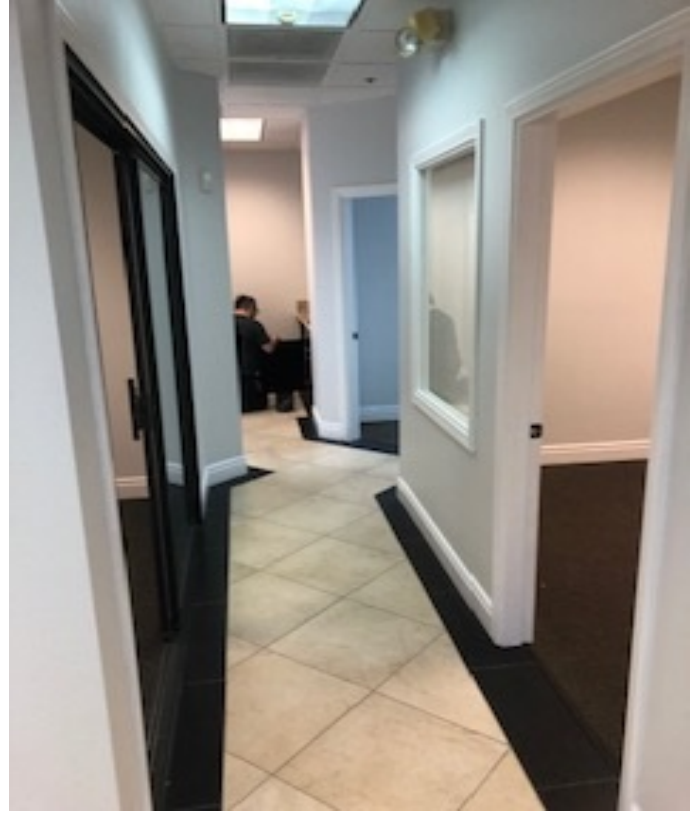


AMERICAN CAPITAL PROPERTIES

FOR LEASE

EXECUTIVE PARK WEST

6833-6899 W. Charleston Blvd
Las Vegas, NV 89117



JOHN ANTHONY, SIOR

213.225.7218

john.anthony@kidder.com

LIC N° 01226464

CHRISTOPHER STECK

213.225.7231

christopher.steck@kidder.com

LIC N° 01841338

CHRISTOPHER GIORDANO

213.225.7219

christopher.giordano@kidder.com

LIC N° 01928706

KIDDER.COM

This information supplied herein is from sources we deem reliable. It is provided without any representation, warranty, or guarantee, expressed or implied as to its accuracy. Prospective Buyer or Tenant should conduct an independent investigation and verification of all matters deemed to be material, including, but not limited to, statements of income and expenses. Consult your attorney, accountant, or other professional advisor.

km Kidder
Mathews

FOR LEASE

City National Bank Building

606 SOUTH OLIVE ST, LOS ANGELES, CA 90014

JOHN ANTHONY, SIOR

213.225.7218

john.anthony@kidder.com

LIC N° 01226464

CHRISTOPHER STECK

213.225.7231

christopher.steck@kidder.com

LIC N° 01841338

CHRISTOPHER GIORDANO

213.225.7219

christopher.giordano@kidder.com

LIC N° 01928706

KIDDER.COM

This information supplied herein is from sources we deem reliable. It is provided without any representation, warranty, or guarantee, expressed or implied as to its accuracy. Prospective Buyer or Tenant should conduct an independent investigation and verification of all matters deemed to be material, including, but not limited to, statements of income and expenses. Consult your attorney, accountant, or other professional advisor.



FOR LEASE

City National Bank Building

606 SOUTH OLIVE ST, LOS ANGELES, CA 90014

6th Floor

6TH STREET | PERSHING SQUARE VIEWS



SUITE 620 | 5,065 RSF

JOHN ANTHONY, SIOR

213.225.7218

john.anthony@kidder.com

LIC N° 01226464

CHRISTOPHER STECK

213.225.7231

christopher.steck@kidder.com

LIC N° 01841338

CHRISTOPHER GIORDANO

213.225.7219

christopher.giordano@kidder.com

LIC N° 01928706

KIDDER.COM

This information supplied herein is from sources we deem reliable. It is provided without any representation, warranty, or guarantee, expressed or implied as to its accuracy. Prospective Buyer or Tenant should conduct an independent investigation and verification of all matters deemed to be material, including, but not limited to, statements of income and expenses. Consult your attorney, accountant, or other professional advisor.



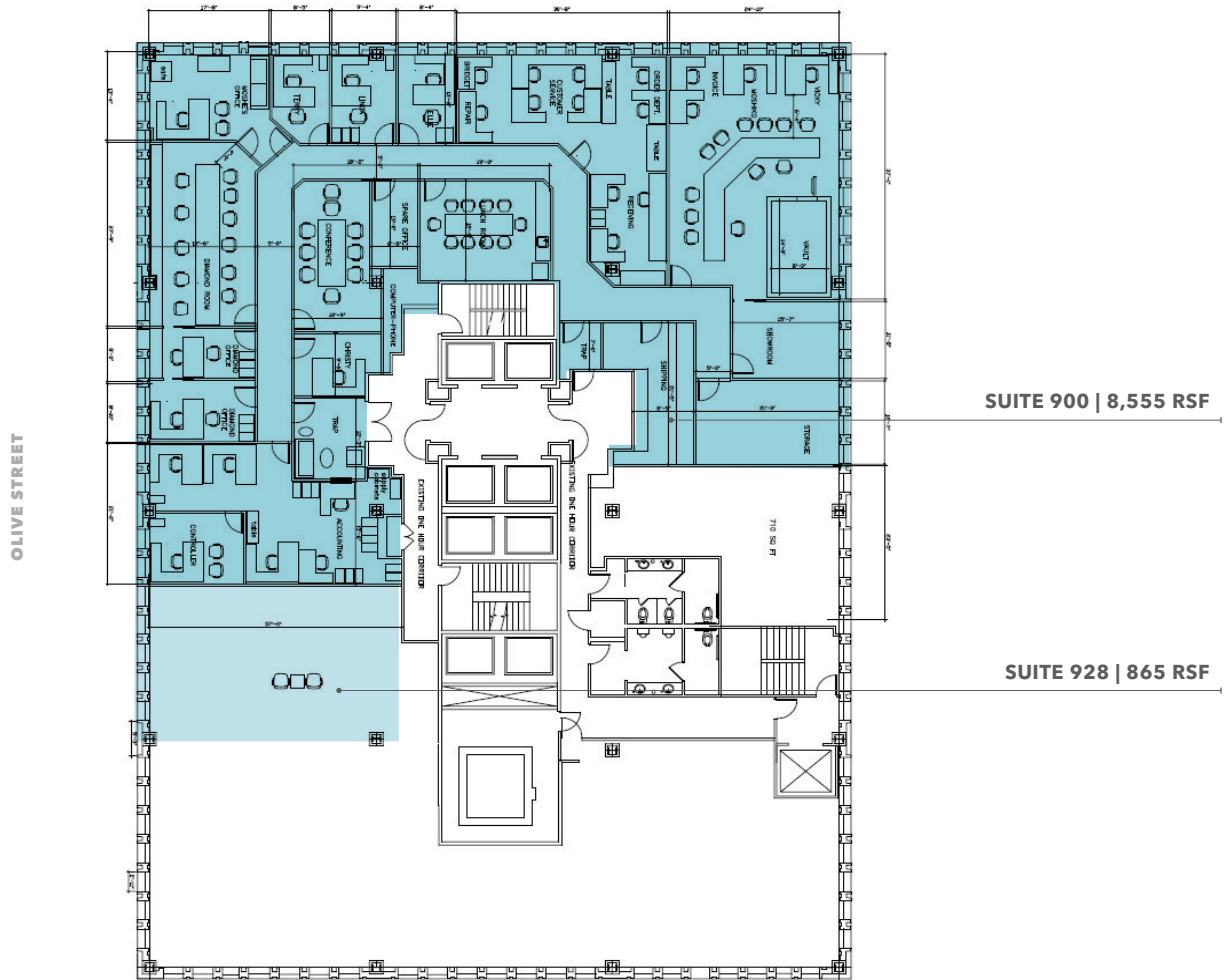
FOR LEASE

City National Bank Building

606 SOUTH OLIVE ST, LOS ANGELES, CA 90014

9th Floor

6TH STREET | PERSHING SQUARE VIEWS



SUITE 900 | 8,555 RSF

SUITE 928 | 865 RSF

JOHN ANTHONY, SIOR

213.225.7218

john.anthony@kidder.com

LIC N° 01226464

CHRISTOPHER STECK

213.225.7231

christopher.steck@kidder.com

LIC N° 01841338

CHRISTOPHER GIORDANO

213.225.7219

christopher.giordano@kidder.com

LIC N° 01928706

KIDDER.COM

This information supplied herein is from sources we deem reliable. It is provided without any representation, warranty, or guarantee, expressed or implied as to its accuracy. Prospective Buyer or Tenant should conduct an independent investigation and verification of all matters deemed to be material, including, but not limited to, statements of income and expenses. Consult your attorney, accountant, or other professional advisor.

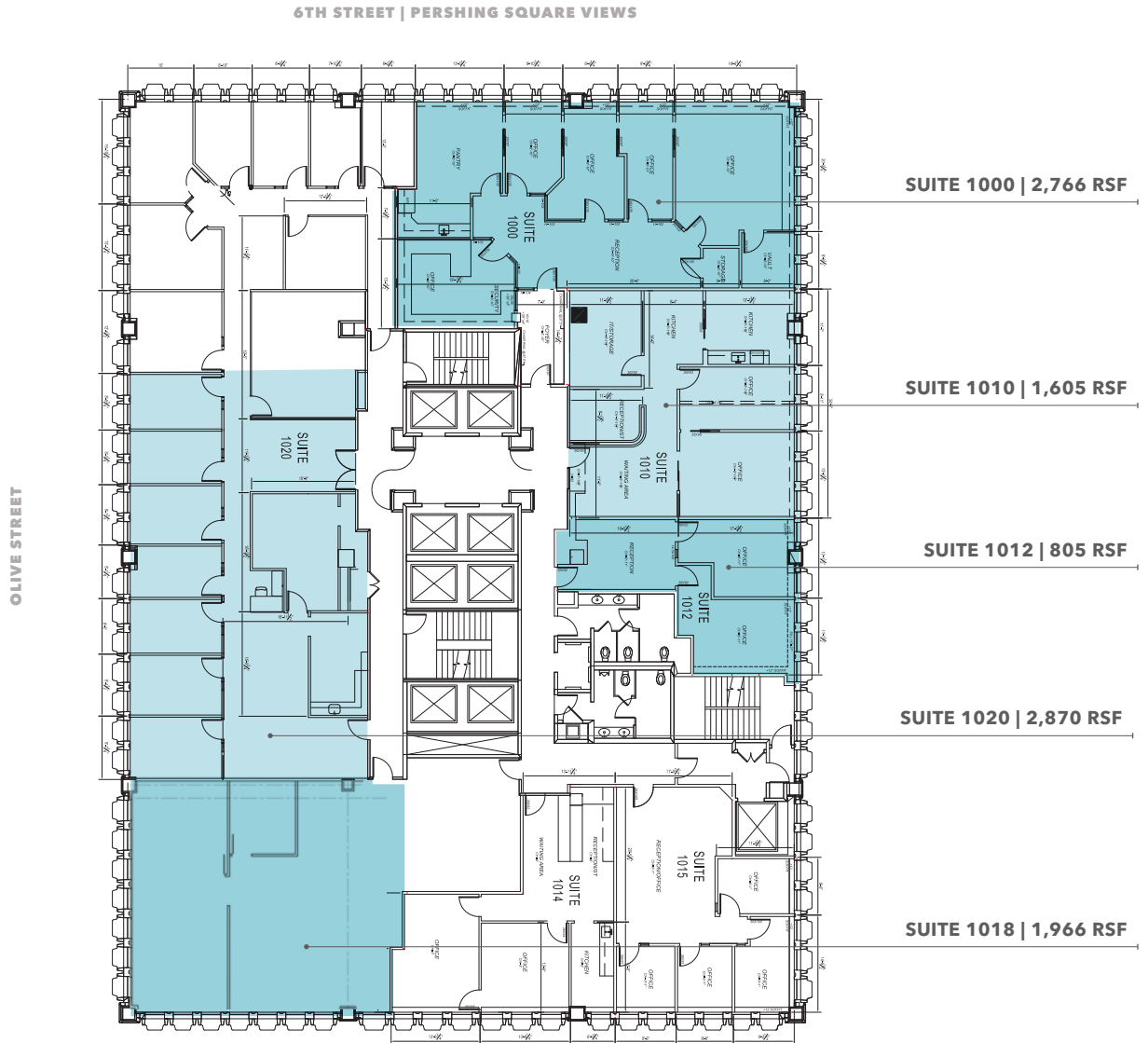


FOR LEASE

City National Bank Building

606 SOUTH OLIVE ST, LOS ANGELES, CA 90014

10th Floor



JOHN ANTHONY, SIOR

213.225.7218

john.anthony@kidder.com

LIC N° 01226464

CHRISTOPHER STECK

213.225.7231

christopher.steck@kidder.com

LIC N° 01841338

CHRISTOPHER GIORDANO

213.225.7219

christopher.giordano@kidder.com

LIC N° 01928706

KIDDER.COM

This information supplied herein is from sources we deem reliable. It is provided without any representation, warranty, or guarantee, expressed or implied as to its accuracy. Prospective Buyer or Tenant should conduct an independent investigation and verification of all matters deemed to be material, including, but not limited to, statements of income and expenses. Consult your attorney, accountant, or other professional advisor.



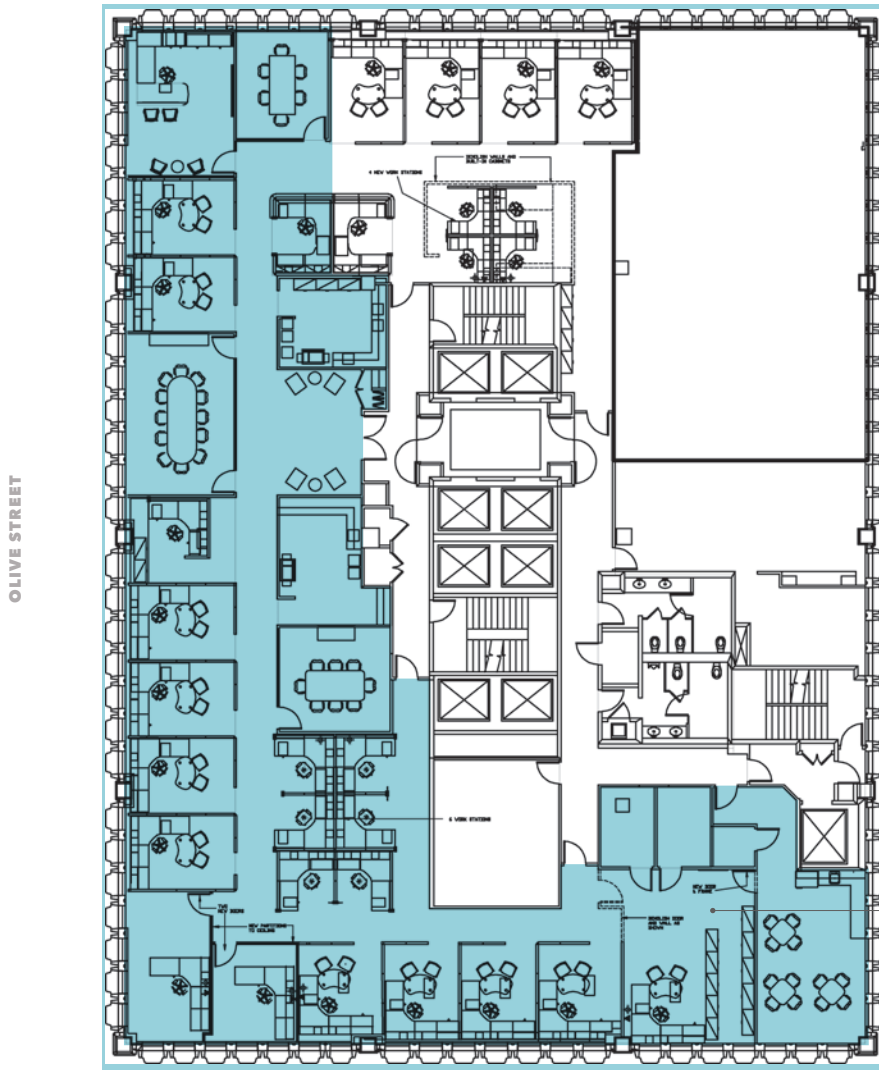
FOR LEASE

City National Bank Building

606 SOUTH OLIVE ST, LOS ANGELES, CA 90014

11th Floor

6TH STREET | PERSHING SQUARE VIEWS



JOHN ANTHONY, SIOR

213.225.7218

john.anthony@kidder.com

LIC N° 01226464

CHRISTOPHER STECK

213.225.7231

christopher.steck@kidder.com

LIC N° 01841338

CHRISTOPHER GIORDANO

213.225.7219

christopher.giordano@kidder.com

LIC N° 01928706

KIDDER.COM

This information supplied herein is from sources we deem reliable. It is provided without any representation, warranty, or guarantee, expressed or implied as to its accuracy. Prospective Buyer or Tenant should conduct an independent investigation and verification of all matters deemed to be material, including, but not limited to, statements of income and expenses. Consult your attorney, accountant, or other professional advisor.



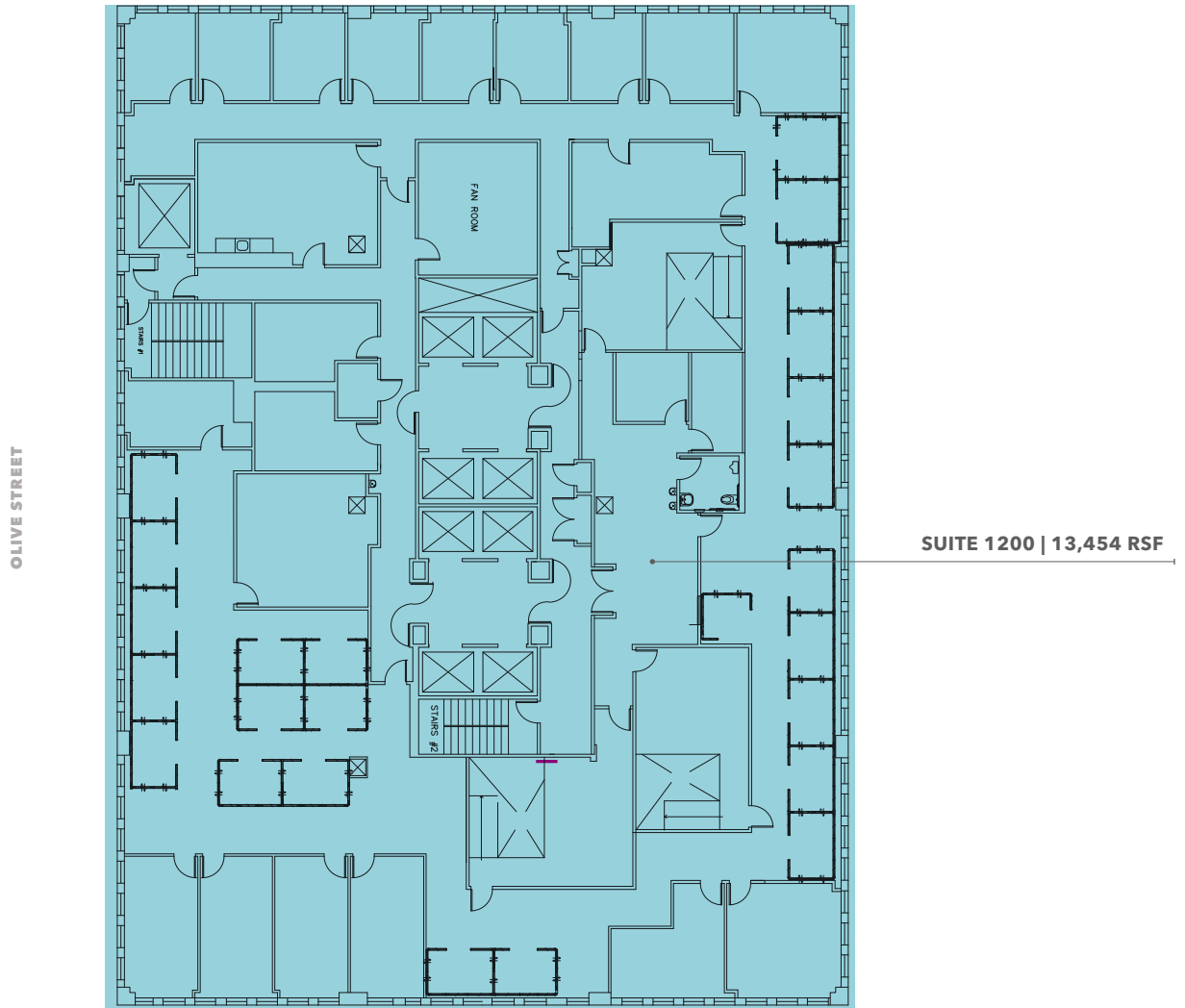
FOR LEASE

City National Bank Building

606 SOUTH OLIVE ST, LOS ANGELES, CA 90014

12th Floor

6TH STREET | PERSHING SQUARE VIEWS



JOHN ANTHONY, SIOR

213.225.7218

john.anthony@kidder.com

LIC N° 01226464

CHRISTOPHER STECK

213.225.7231

christopher.steck@kidder.com

LIC N° 01841338

CHRISTOPHER GIORDANO

213.225.7219

christopher.giordano@kidder.com

LIC N° 01928706

KIDDER.COM

This information supplied herein is from sources we deem reliable. It is provided without any representation, warranty, or guarantee, expressed or implied as to its accuracy. Prospective Buyer or Tenant should conduct an independent investigation and verification of all matters deemed to be material, including, but not limited to, statements of income and expenses. Consult your attorney, accountant, or other professional advisor.



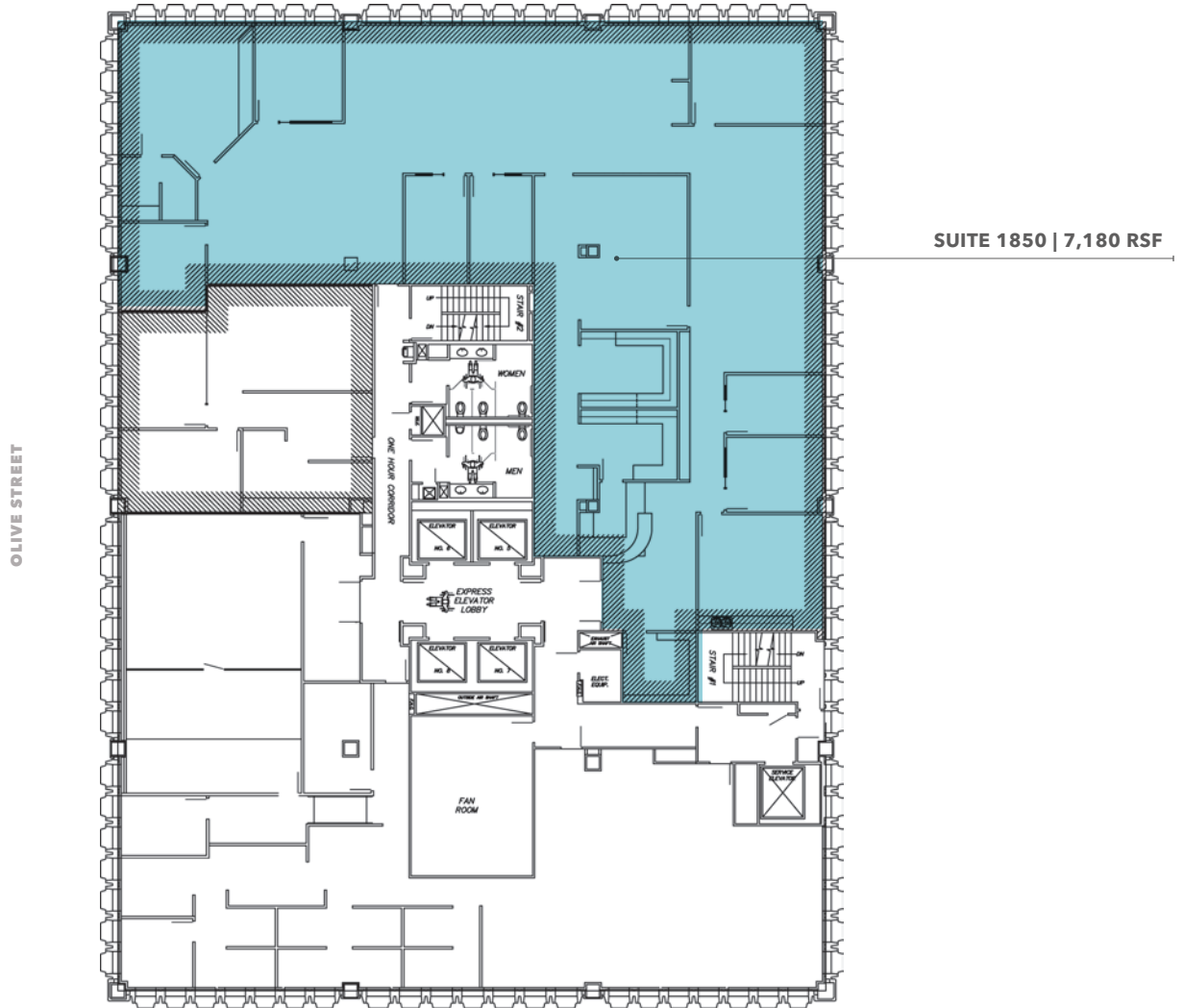
FOR LEASE

City National Bank Building

606 SOUTH OLIVE ST, LOS ANGELES, CA 90014

18th Floor

6TH STREET | PERSHING SQUARE VIEWS



JOHN ANTHONY, SIOR

213.225.7218

john.anthony@kidder.com

LIC N° 01226464

CHRISTOPHER STECK

213.225.7231

christopher.steck@kidder.com

LIC N° 01841338

CHRISTOPHER GIORDANO

213.225.7219

christopher.giordano@kidder.com

LIC N° 01928706

KIDDER.COM

This information supplied herein is from sources we deem reliable. It is provided without any representation, warranty, or guarantee, expressed or implied as to its accuracy. Prospective Buyer or Tenant should conduct an independent investigation and verification of all matters deemed to be material, including, but not limited to, statements of income and expenses. Consult your attorney, accountant, or other professional advisor.



FOR LEASE

City National Bank Building

606 SOUTH OLIVE ST, LOS ANGELES, CA 90014

Renewal of Pershing Square

Due to the revitalization of several of its neighborhoods, downtown Los Angeles thrives with a vibrancy never seen in its history. Areas like the Old Bank District and the Historic Core were once filled with vacant buildings; now they're teeming with brand-new apartment buildings, high-end retail shops and restaurants. As a result, businesses are relocating downtown. Population has increased 150% since 2000, and continues to grow at a rapid pace. New downtown destinations like the BLOC, Grand Central Market and FIGat7th draw tourists and locals alike, both day and night.

Pershing Square Park is the heart of DTLA. It's also one of the few remaining areas to not receive a facelift. That's about to change. Earlier this year, an international design-team led by the Paris-based Agence Ter were selected to redesign the five-acre park using what they call a "radical flatness" to open up the space, connecting one part of the city to another, offering visitors both entertainment with concert events and relaxation with its great lawn and reflecting pool. Think of it as Central Park on the West Coast.

Other popular venues nearby include Staples Center, Dodger Stadium, Expo Park/USC, The Music Center, and Microsoft Theater.



5-Mile Demographics



**ESTIMATED
POPULATION**
67,369



**AVERAGE
HH INCOME**
\$35,025



**DAYTIME
EMPLOYMENT**
190,200

JOHN ANTHONY, SIOR

213.225.7218

john.anthony@kidder.com

LIC N° 01226464

CHRISTOPHER STECK

213.225.7231

christopher.steck@kidder.com

LIC N° 01841338

CHRISTOPHER GIORDANO

213.225.7219

christopher.giordano@kidder.com

LIC N° 01928706

KIDDER.COM

This information supplied herein is from sources we deem reliable. It is provided without any representation, warranty, or guarantee, expressed or implied as to its accuracy. Prospective Buyer or Tenant should conduct an independent investigation and verification of all matters deemed to be material, including, but not limited to, statements of income and expenses. Consult your attorney, accountant, or other professional advisor.

km Kidder Mathews